

Revisions

Issue	Date	Note
2	16/10/2023	See note GTXPDC/842

1. Mechanical

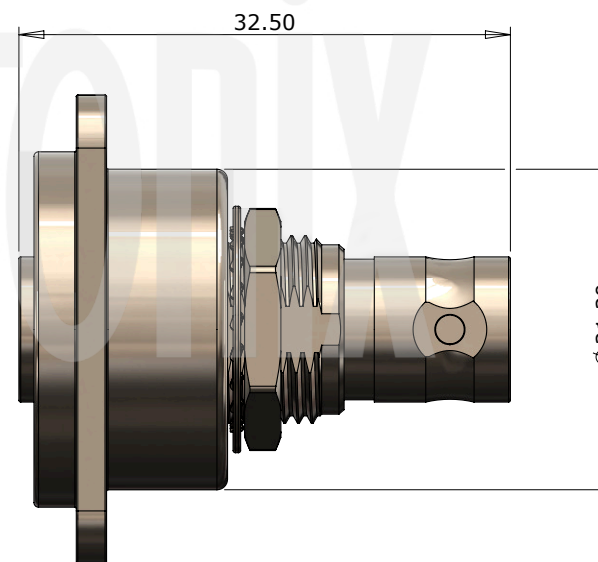
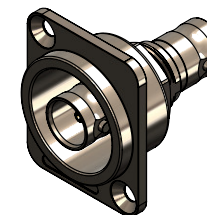
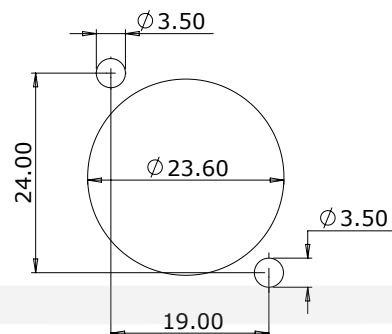
Fixing Method	Panel
Durability	500 mating cycles
Contact Gender	Female

2. Environmental

RoHS Compliant	Yes
Temperature Range	-65 to +165 degrees C

3. Electrical

Dielectric Withstanding	1500 Volts RMS Maximum
Impedance	75 ohms
Interface Frequency	12 GHz
Working Voltage	500 Volts RMS Maximum
Return Loss	3GHz -38dB 6GHz -35dB 9GHz -25dB 12GHz -21dB



Description	Material	Finish
7 Housing	Zinc Alloy	Nickel
6 Insulator	POM	Clear
5 Washer	Phosphor Bronze	Nickel
4 Lock Nut	Brass	Nickel
3 Dielectric	PTFE	White
2 Contact	Phosphor Bronze	Gold
1 Body	Brass	Nickel

Unless otherwise specified tolerances
 0.5-5 = ±0.2
 >5-30 = ±0.4
 >30-120 = ±0.6
 >120-315 = ±1.0
 >315-1000 = ±1.6
 Angles = ±5°
 Units = mm

This document is the confidential property of Gigatronix Limited and may not be copied, reproduced or transmitted to any third party without written authorisation.



Author	PJP
Drawn by	PJP
Drawing date	05/12/2019
Checked by	DB
Checked date	05/12/2019
Scale	Not to scale

Part Number BN02-10-RH6A-Z
Title: BNC 12G SDI Bulkhead Jack to Jack Isolated Recessed Adaptor, Nickel Plated