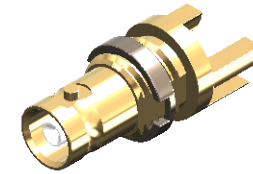


**Revisions**

Issue	Date	Note
5	19/10/2023	See GTXPDC/847

**DATASHEET**



**1. Mechanical**

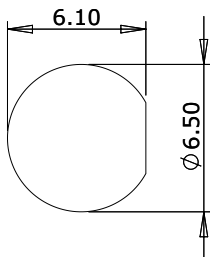
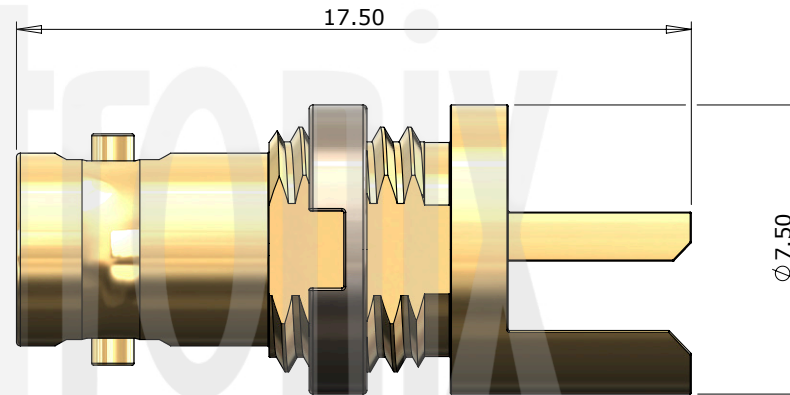
Fixing Method	PCB
Durability	500 mating cycles
Lock Nut Torque	1.1 Nm (9.7 in-lbs)

**2. Environmental**

RoHS Compliant	Yes
Temperature Range	-65 to +165 degrees C

**3. Electrical**

Dielectric Withstanding	500 Volts RMS Maximum
Impedance	75 ohms
Interface Frequency	12 GHz
Working Voltage	500 Volts RMS Maximum



Panel Cut Out

Description	Material	Finish
4 Locknut	Brass	Nickel
3 Dielectric	PTFE	White
2 Contact	Beryllium Copper	Gold
1 Body	Brass	Gold

Unless otherwise specified tolerances  
 0.5-5 = ±0.2  
 >5-30 = ±0.4  
 >30-120 = ±0.6  
 >120-315 = ±1.0  
 >315-1000 = ±1.6  
 Angles = ±5°  
 Units = mm

This document is the confidential property of Gigatronix Limited and may not be copied, reproduced or transmitted to any third party without written authorisation.



<b>Author</b>	PJP
<b>Drawn by</b>	PJP
<b>Drawing date</b>	17/07/2014
<b>Checked by</b>	DB
<b>Checked date</b>	08/07/2015
<b>Scale</b>	Not to scale

**Part Number** HD02-X800-N01-Z  
**Title:** HD BNC 12G SDI End Launch Bulkhead Jack, Gold Plated, 1.57mm PCB