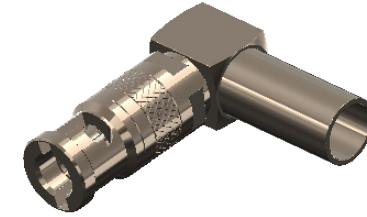


**Revisions**

Issue	Date	Note
2	26/09/2017	See GTXPDC/592 - Checked DB 19/10/2022

**DATASHEET**



**1. Mechanical**

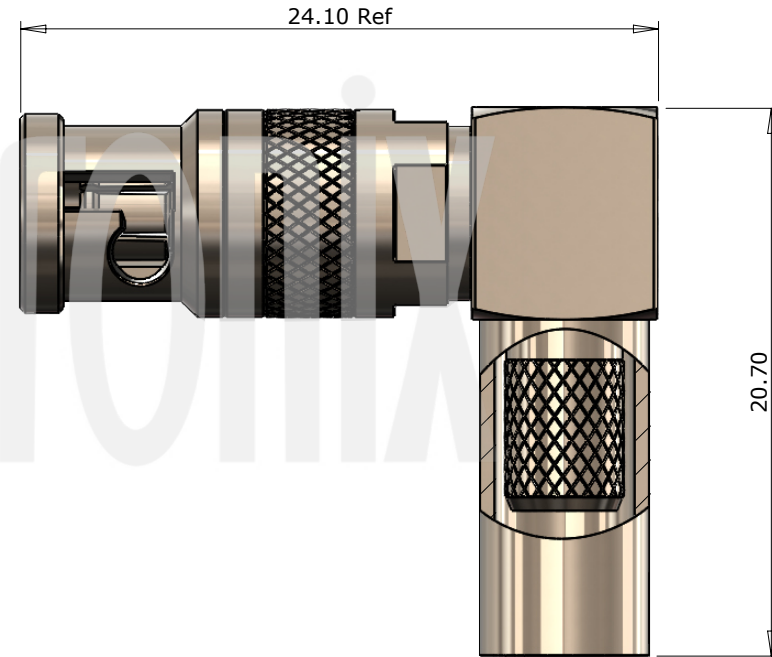
Fixing Method	Crimp
Durability	500 mating cycles
Cable Retention	Equal to breaking strain of cable

**2. Environmental**

RoHS Compliant	Yes
Temperature Range	-65 to +165 degrees C

**3. Electrical**

Dielectric Withstanding	500 Volts RMS Maximum
Impedance	75 ohms
Interface Frequency	12 GHz
Working Voltage	500 Volts RMS Maximum



Description	Material	Finish
6 End Cap	Brass	Nickel
5 Dielectric	PTFE	White
4 Ferrule	Brass	Nickel
3 Coupling Nut	Brass	Nickel
2 Pin	Beryllium Copper	Gold
1 Body	Brass	Nickel

Unless otherwise specified tolerances  
 0.5-5 = ±0.2  
 >5-30 = ±0.4  
 >30-120 = ±0.6  
 >120-315 = ±1.0  
 >315-1000 = ±1.6  
 Angles = ±5°  
 Units = mm

This document is the confidential property of Gigatronix Limited and may not be copied, reproduced or transmitted to any third party without written authorisation.



<b>Author</b>	PJP
<b>Drawn by</b>	PJP
<b>Drawing date</b>	26/09/2017
<b>Checked by</b>	DB
<b>Checked date</b>	10/10/2017
<b>Scale</b>	Not to scale

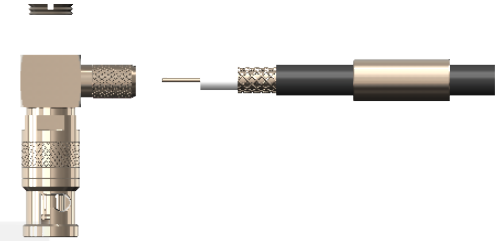
**Part Number** HD17-0628-C06-Z  
**Title:** HD BNC 12G SDI Crimp Right Angle Plug, Belden 1855A, Belden 4855R, Belden 1855ENH

Revisions		
Issue	Date	Note
2	26/09/2017	See GTXPCD/592 - Checked DB 19/10/2022

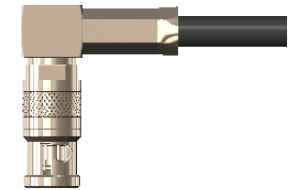
## ASSEMBLY INSTRUCTIONS

### Assembly Instructions

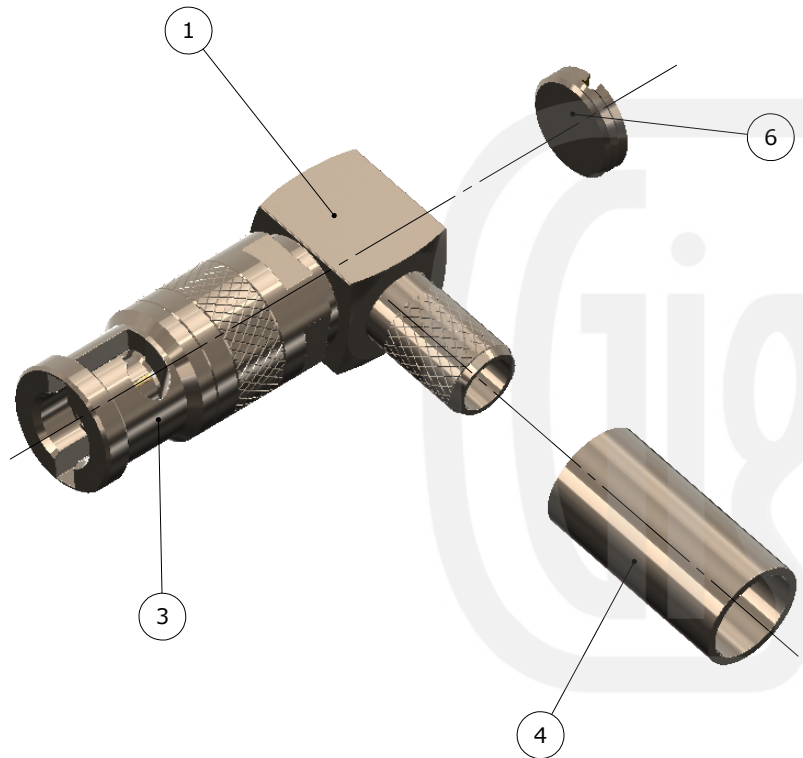
1) Slide the ferrule onto the cable and strip the cable to the dimensions as shown, taking care not to nick the centre conductor or braid.



2) Insert the cable into the body, ensuring that the cable braid is on the outside of the connector mandril and that the centre core locates in the internal mounting post.



3) Slide the ferrule forward and crimp. Solder the centre core of the cable to the mounting post and screw in the end cap.



**Crimp Die Sizes:**  
5.41mm Hex., Solder Centre Core

**Strip Dimensions:**  
A=7.5mm, B=4.0mm, C=1.5mm



6	End Cap	Brass	Nickel
5	Dielectric	PTFE	White
4	Ferrule	Brass	Nickel
3	Coupling Nut	Brass	Nickel
2	Pin	Beryllium Copper	Gold
1	Body	Brass	Nickel
	<b>Description</b>	<b>Material</b>	<b>Finish</b>

Unless otherwise specified tolerances  
 0.5-5 =  $\pm 0.2$   
 >5-30 =  $\pm 0.4$   
 >30-120 =  $\pm 0.6$   
 >120-315 =  $\pm 1.0$   
 >315-1000 =  $\pm 1.6$   
 Angles =  $\pm 5^\circ$   
 Units = mm

This document is the confidential property of Gigatronix Limited and may not be copied, reproduced or transmitted to any third party without written authorisation.

# Gigatronix

**Part Number** HD17-0628-C06-Z

**Title:** HD BNC 12G SDI Crimp Right Angle Plug, Belden 1855A, Belden 4855R, Belden 1855ENH

<b>Author</b>	PJP
<b>Drawn by</b>	PJP
<b>Drawing date</b>	26/09/2017
<b>Checked by</b>	DB
<b>Checked date</b>	10/10/2017
<b>Scale</b>	Not to scale