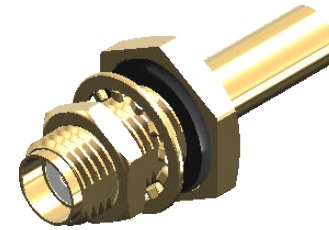


Revisions

| Issue | Date | Note |
|-------|------------|--|
| 2 | 20/03/2023 | See GTXPDC/691 - checked DB 21/03/2023 |



1. Mechanical

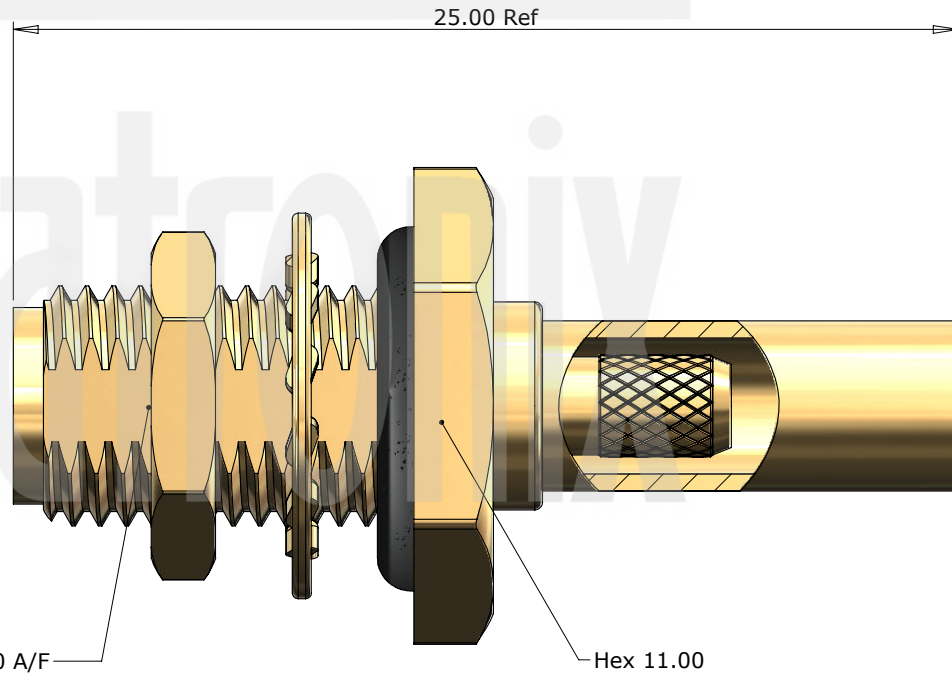
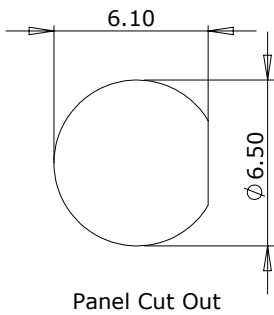
| | |
|---------------------|-----------------------------------|
| Cable Retention | Equal to breaking strain of cable |
| Durability | 500 mating cycles |
| Lock Nut Torque | 0.9 to 1.1Nm / 8-10 in-lbs |
| Contact Termination | Solder |

2. Environmental

| | |
|-------------------|-----------------------|
| RoHS Compliant | Yes |
| Temperature Range | -65 to +165 degrees C |

3. Electrical

| | |
|-------------------------|-----------------------|
| Dielectric Withstanding | 750 Volts RMS Maximum |
| Impedance | 50 ohms |
| Interface Frequency | 12.4 GHz |
| Working Voltage | 335 Volts RMS Maximum |



| Issue | Description | Material | Finish |
|-------|-------------|------------------|--------|
| 7 | Locknut | Brass | Gold |
| 6 | Washer | Brass | Gold |
| 5 | O Ring | Silicone Rubber | Black |
| 4 | Ferrule | Brass | Gold |
| 3 | Dielectric | PTFE | White |
| 2 | Contact | Beryllium Copper | Gold |
| 1 | Body | Brass | Gold |

Unless otherwise specified tolerances
 0.5-5 = ±0.2
 >5-30 = ±0.4
 >30-120 = ±0.6
 >120-315 = ±1.0
 >315-1000 = ±1.6
 Angles = ±5°
 Units = mm

This document is the confidential property of Gigatronix Limited and may not be copied, reproduced or transmitted to any third party without written authorisation.



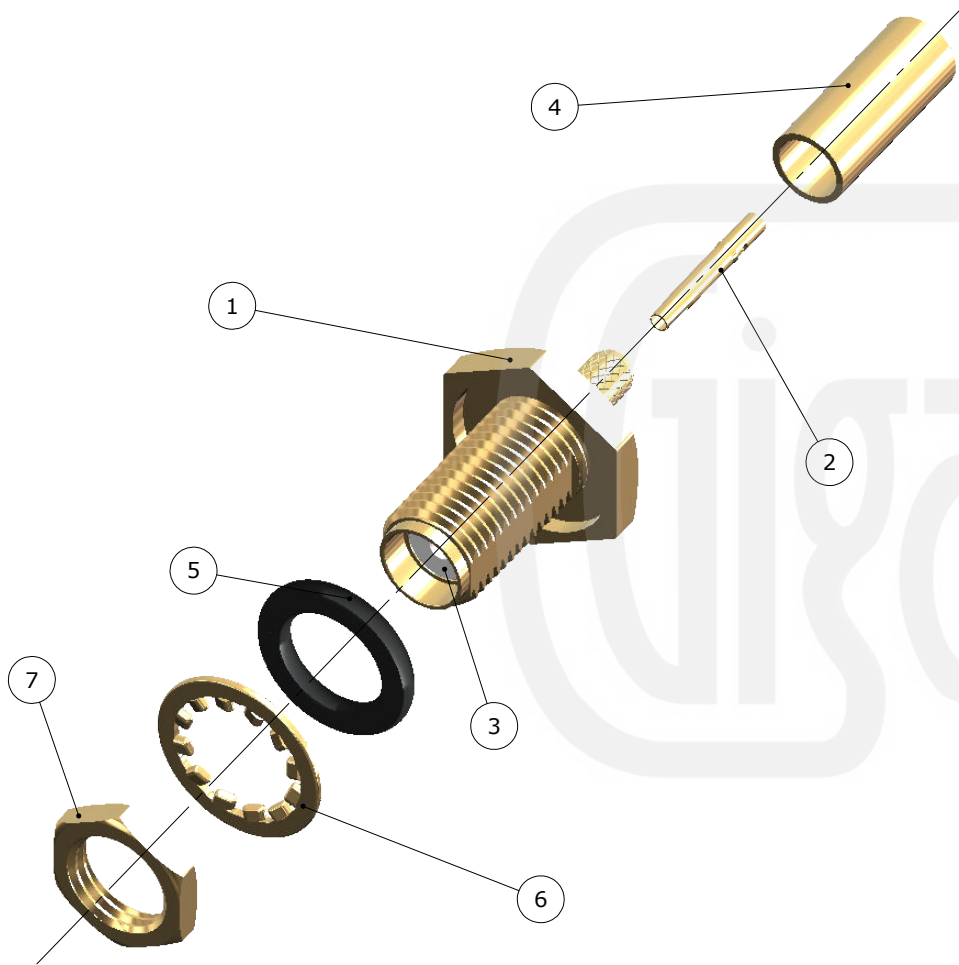
| | |
|---------------------|--------------|
| Author | PJP |
| Drawn by | PJP |
| Drawing date | 24/09/2014 |
| Checked by | DB |
| Checked date | 29/09/2014 |
| Scale | Not to scale |

| | |
|--------------------|--|
| Part Number | MA02-D316-C01 |
| Title: | SMA Crimp Bulkhead Jack, Gold Plated, 11mm Hex Flange, RD316 |

Revisions

| Issue | Date | Note |
|-------|------------|--|
| 2 | 20/03/2023 | See GTXPDC/691 - checked DB 21/03/2023 |

ASSEMBLY INSTRUCTIONS



Assembly Instructions:

1) Slide the ferrule onto the cable and strip the cable to the dimensions as shown, taking care not to nick the centre conductor or braid



2) Solder the contact onto the centre core and slide the contact into the body until it captivates, ensuring that the cable braid is on the outside of the connector mandril



3) Slide the ferrule forward and crimp

Crimp Die Sizes:
3.83mm Hex., Solder centre core

Strip Dimensions:
A=7.0mm, B=2.5mm, C=2.5mm



| | | | |
|---|--------------------|------------------|---------------|
| 7 | Locknut | Brass | Gold |
| 6 | Washer | Brass | Gold |
| 5 | O Ring | Silicone Rubber | Black |
| 4 | Ferrule | Brass | Gold |
| 3 | Dielectric | PTFE | White |
| 2 | Contact | Beryllium Copper | Gold |
| 1 | Body | Brass | Gold |
| | Description | Material | Finish |

Unless otherwise specified tolerances
 0.5-5 = ±0.2
 >5-30 = ±0.4
 >30-120 = ±0.6
 >120-315 = ±1.0
 >315-1000 = ±1.6
 Angles = ±5°
 Units = mm

This document is the confidential property of Gigatronix Limited and may not be copied, reproduced or transmitted to any third party without written authorisation.



| | |
|---------------------|--------------|
| Author | PJP |
| Drawn by | PJP |
| Drawing date | 24/09/2014 |
| Checked by | DB |
| Checked date | 29/09/2014 |
| Scale | Not to scale |

Part Number MA02-D316-C01

Title: SMA Crimp Bulkhead Jack, Gold Plated, 11mm Hex Flange, RD316