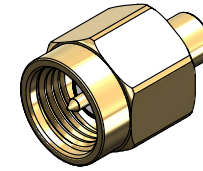


**Revisions**

Issue	Date	Note
2	10/06/2024	See note GTXPDC/947

**DATASHEET**



**1. Mechanical**

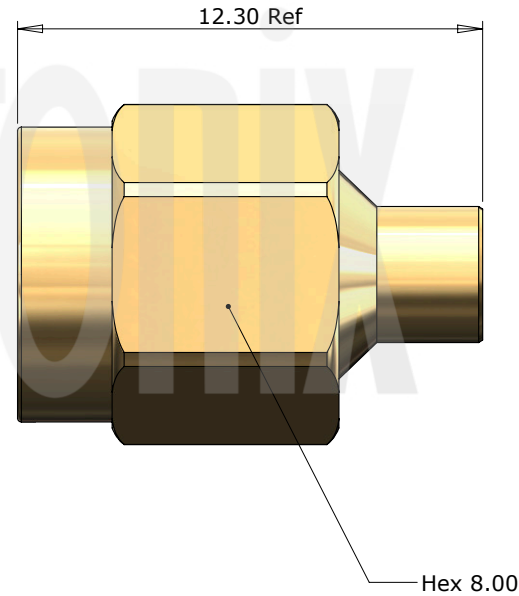
Cable Retention	27N
Durability	500 mating cycles
Fixing Method	Solder
Cable Retention	136N
Mating Torque	0.79 to 1.13Nm

**2. Environmental**

RoHS Compliant	Yes
Temperature Range	-65 to +165 degrees C

**3. Electrical**

Dielectric Withstanding	750 Volts RMS Maximum
Impedance	50 ohms
Interface Frequency	18 GHz
Working Voltage	335 Volts RMS Maximum



4	Insulator	PTFE	White
3	Coupling Nut	Brass	Gold
2	Pin	Brass	Gold
1	Body	Brass	Gold
	<b>Description</b>	<b>Material</b>	<b>Finish</b>

Unless otherwise specified tolerances  
 0.5-5 = ±0.2  
 >5-30 = ±0.4  
 >30-120 = ±0.6  
 >120-315 = ±1.0  
 >315-1000 = ±1.6  
 Angles = ±5°  
 Units = mm

This document is the confidential property of Gigatronix Limited and may not be copied, reproduced or transmitted to any third party without written authorisation.



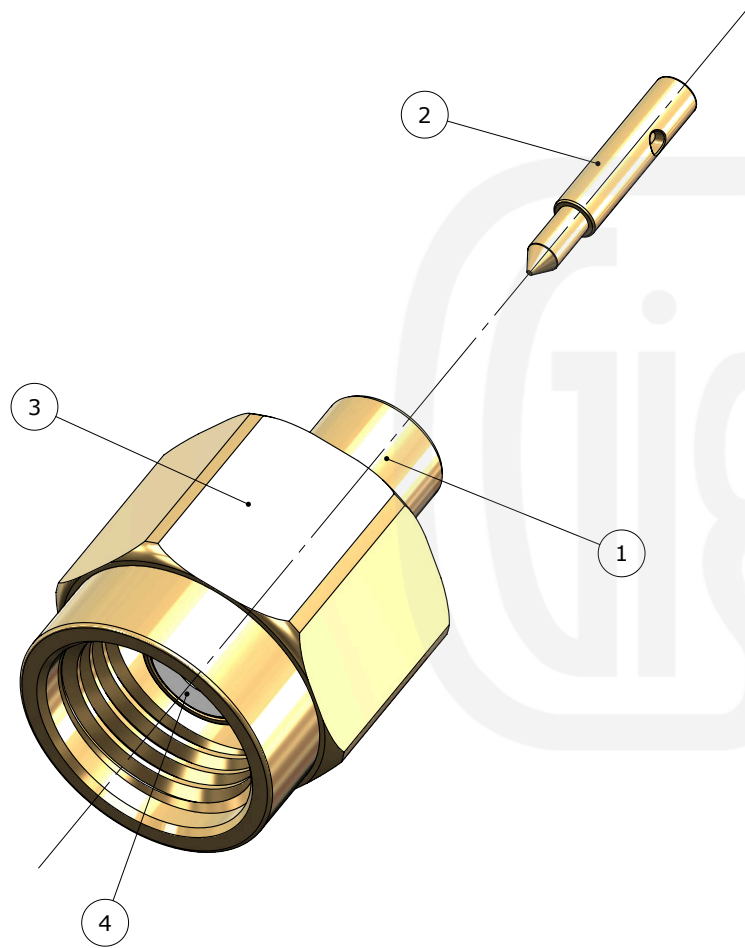
<b>Author</b>	PJP
<b>Drawn by</b>	PJP
<b>Drawing date</b>	06/07/2020
<b>Checked by</b>	SM
<b>Checked date</b>	08/07/2020
<b>Scale</b>	Not to scale

<b>Part Number</b>	MA15-0405-R01
<b>Title:</b>	SMA Solder Plug, Gold Plated, RG405, .085 semi-rigid

**Revisions**

Issue	Date	Note
2	10/06/2024	See note GTXPCD/947

**ASSEMBLY INSTRUCTIONS**



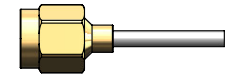
**Assembly Instructions:**

1) Strip the cable to the dimensions as shown, taking care not to nick the centre core.



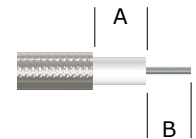
2) Solder the pin onto the centre core and slide the pin into the body, ensuring that the pin is located in accordance with MIL-C-39012 interface dimensional requirements.

3) Solder the outer shield of the cable to the connector mandril.



**Strip Dimensions:**

Conformable Cable - A=0.5mm, B=3.5mm  
Semi Rigid Cable (using a 0.5mm spacer) - A=0.0mm, B=4.0mm



Description	Material	Finish
4 Insulator	PTFE	White
3 Coupling Nut	Brass	Gold
2 Pin	Brass	Gold
1 Body	Brass	Gold

Unless otherwise specified tolerances  
 0.5-5 = ±0.2  
 >5-30 = ±0.4  
 >30-120 = ±0.6  
 >120-315 = ±1.0  
 >315-1000 = ±1.6  
 Angles = ±5°  
 Units = mm

This document is the confidential property of Gigatronix Limited and may not be copied, reproduced or transmitted to any third party without written authorisation.



<b>Author</b>	PJP
<b>Drawn by</b>	PJP
<b>Drawing date</b>	06/07/2020
<b>Checked by</b>	SM
<b>Checked date</b>	08/07/2020
<b>Scale</b>	Not to scale

**Part Number** MA15-0405-R01

**Title:** SMA Solder Plug, Gold Plated, RG405, .085 semi-rigid