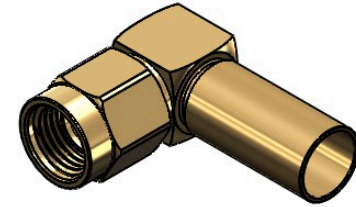


**Revisions**

| Issue | Date       | Note            |
|-------|------------|-----------------|
| 1     | 20/11/2024 | See GTXPDC/1021 |

**DATASHEET**



**1. Mechanical**

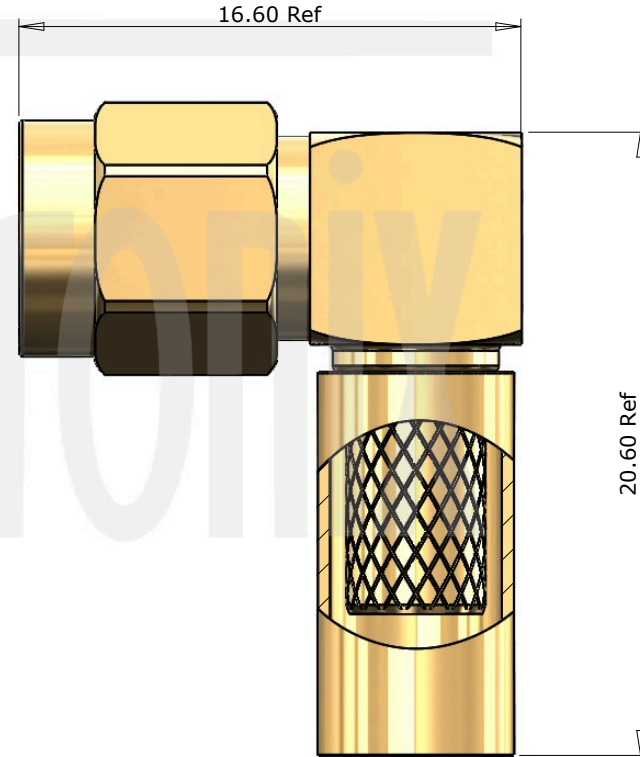
|                     |                                   |
|---------------------|-----------------------------------|
| Cable Retention     | Equal to breaking strain of cable |
| Durability          | 500 mating cycles                 |
| Contact Termination | Solder                            |
| Fixing Method       | Crimp                             |
| Mating Torque       | 0.34 to 0.57Nm (3-5 in-lbs)       |

**2. Environmental**

|                   |                       |
|-------------------|-----------------------|
| RoHS Compliant    | Yes                   |
| Temperature Range | -65 to +165 degrees C |

**3. Electrical**

|                         |                        |
|-------------------------|------------------------|
| Dielectric Withstanding | 1000 Volts RMS Maximum |
| Impedance               | 50 ohms                |
| Interface Frequency     | 12.4 GHz               |
| Working Voltage         | 500 Volts RMS Maximum  |



| Description    | Material         | Finish |
|----------------|------------------|--------|
| 6 Ferrule      | Brass            | Gold   |
| 5 End Cap      | Brass            | Gold   |
| 4 Dielectric   | PTFE             | White  |
| 3 Contact      | Beryllium Copper | Gold   |
| 2 Coupling Nut | Brass            | Gold   |
| 1 Body         | Brass            | Gold   |

Unless otherwise specified tolerances  
 0.5-5 = ±0.2  
 >5-30 = ±0.4  
 >30-120 = ±0.6  
 >120-315 = ±1.0  
 >315-1000 = ±1.6  
 Angles = ±5°  
 Units = mm

This document is the confidential property of Gigatronix Limited and may not be copied, reproduced or transmitted to any third party without written authorisation.



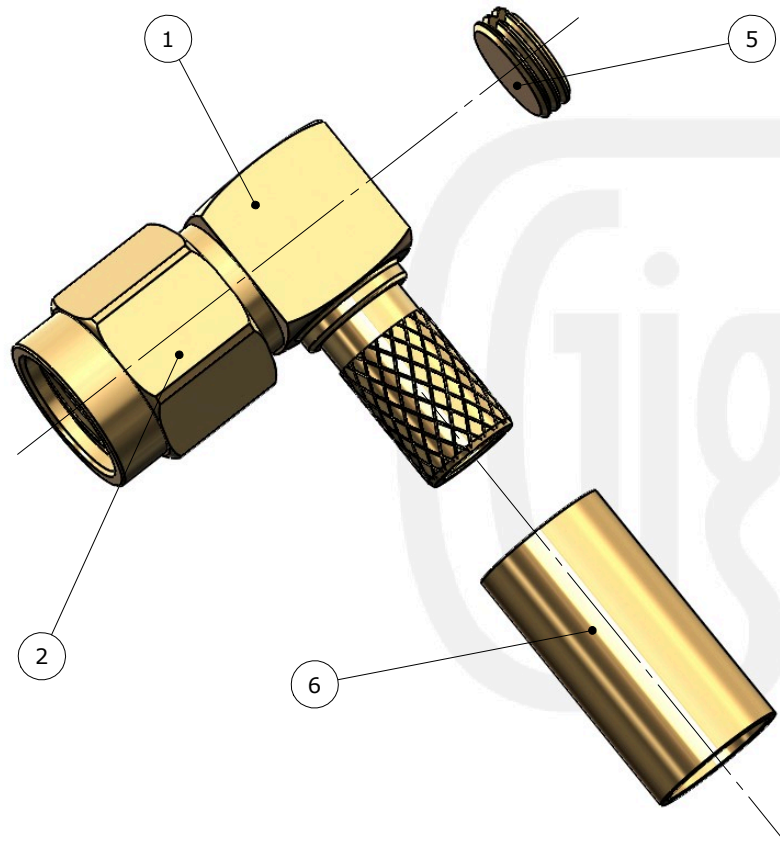
|                     |              |
|---------------------|--------------|
| <b>Author</b>       | PJP          |
| <b>Drawn by</b>     | PJP          |
| <b>Drawing date</b> | 20/11/2024   |
| <b>Checked by</b>   | DB           |
| <b>Checked date</b> | 21/11/2024   |
| <b>Scale</b>        | Not to scale |

**Part Number** MA17-0400-C01-R  
**Title:** SMA Reverse Polarity Crimp Right Angle Plug, Gold Plated, RG142, RG223, RG400

Revisions

| Issue | Date       | Note            |
|-------|------------|-----------------|
| 1     | 20/11/2024 | See GTXPDC/1021 |

ASSEMBLY INSTRUCTIONS



Assembly Instructions

1) Slide the ferrule onto the cable and strip the cable to the dimensions as shown, taking care not to nick the centre conductor or braid.



2) Insert the cable into the body, ensuring that the cable braid is on the outside of the connector mandril and that the centre core locates in the internal mounting post.

3) Slide the ferrule forward and crimp. Solder the centre core of the cable to the mounting post and fit the end cap.



**Crimp Die Sizes:**  
5.41mm Hex., Solder centre core

**Strip Dimensions:**  
A=8.0mm, B=3.0mm, C=2.5mm



| Description    | Material         | Finish |
|----------------|------------------|--------|
| 6 Ferrule      | Brass            | Gold   |
| 5 End Cap      | Brass            | Gold   |
| 4 Dielectric   | PTFE             | White  |
| 3 Contact      | Beryllium Copper | Gold   |
| 2 Coupling Nut | Brass            | Gold   |
| 1 Body         | Brass            | Gold   |

Unless otherwise specified tolerances  
 0.5-5 = ±0.2  
 >5-30 = ±0.4  
 >30-120 = ±0.6  
 >120-315 = ±1.0  
 >315-1000 = ±1.6  
 Angles = ±5°  
 Units = mm

This document is the confidential property of Gigatronix Limited and may not be copied, reproduced or transmitted to any third party without written authorisation.



**Part Number** MA17-0400-C01-R  
**Title:** SMA Reverse Polarity Crimp Right Angle Plug, Gold Plated, RG142, RG223, RG400

|                     |              |
|---------------------|--------------|
| <b>Author</b>       | PJP          |
| <b>Drawn by</b>     | PJP          |
| <b>Drawing date</b> | 20/11/2024   |
| <b>Checked by</b>   | DB           |
| <b>Checked date</b> | 21/11/2024   |
| <b>Scale</b>        | Not to scale |