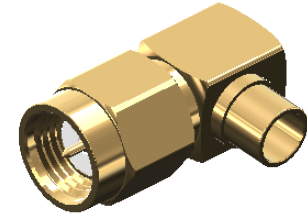


**Revisions**

Issue	Date	Note
2	08/03/2023	See note GTXPDC/688 - checked DB 16/03/2023

**DATASHEET**



**1. Mechanical**

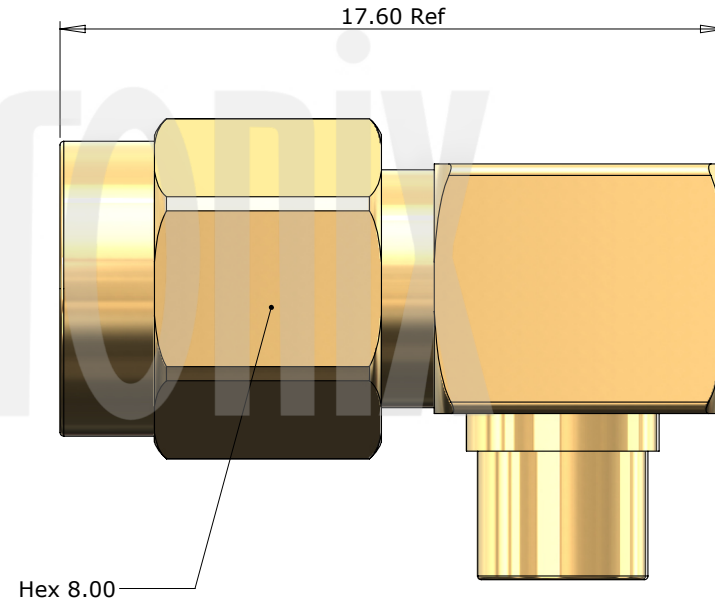
Cable Retention	272N
Durability	500 mating cycles
Fixing Method	Solder
Mating Torque	0.79 to 1.13Nm

**2. Environmental**

RoHS Compliant	Yes
Temperature Range	-65 to +165 degrees C

**3. Electrical**

Dielectric Withstanding	1000 Volts RMS Maximum
Impedance	50 ohms
Interface Frequency	12.4 GHz
Working Voltage	500 Volts RMS Maximum



Description	Material	Finish
5 End Cap	Brass	Gold
4 Coupling Nut	Brass	Gold
3 Dielectric	PTFE	White
2 Pin	Brass	Gold
1 Body	Brass	Gold

Unless otherwise specified tolerances  
 0.5-5 = ±0.2  
 >5-30 = ±0.4  
 >30-120 = ±0.6  
 >120-315 = ±1.0  
 >315-1000 = ±1.6  
 Angles = ±5°  
 Units = mm

This document is the confidential property of Gigatronix Limited and may not be copied, reproduced or transmitted to any third party without written authorisation.

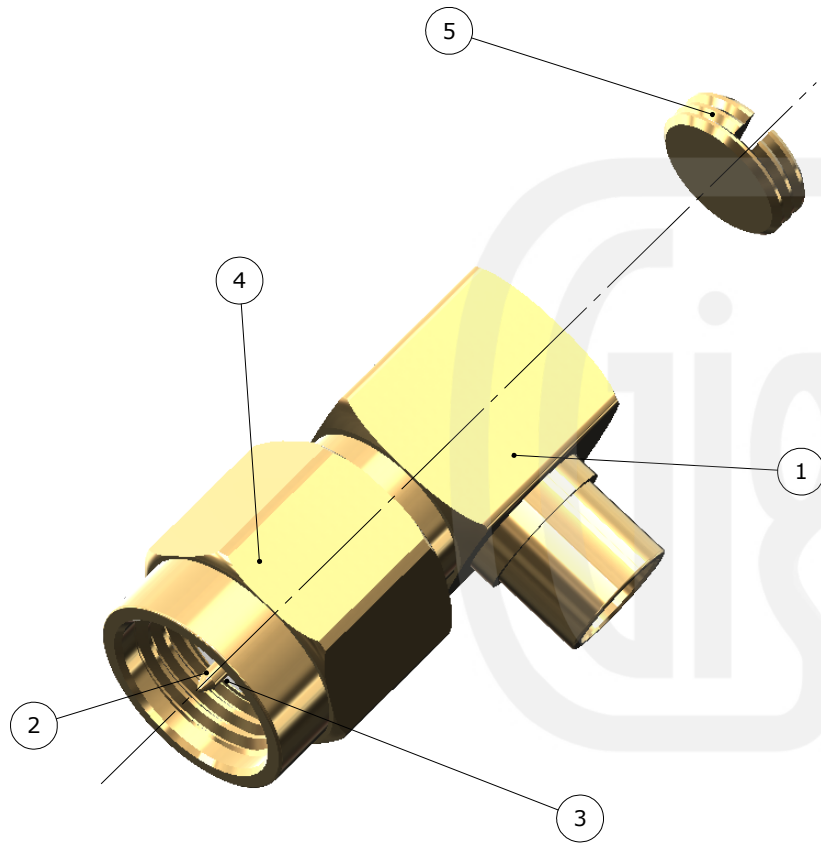


<b>Author</b>	PJP
<b>Drawn by</b>	PJP
<b>Drawing date</b>	07/08/2020
<b>Checked by</b>	SM
<b>Checked date</b>	14/08/2020
<b>Scale</b>	Not to scale

<b>Part Number</b>	MA17-0402-R01
<b>Title:</b>	SMA Solder Right Angle Plug, Gold Plated, RG402, .141 semi-rigid

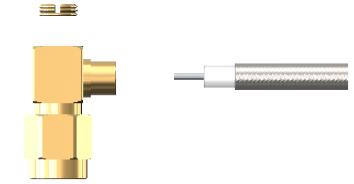
Revisions		
Issue	Date	Note
2	08/03/2023	See note GTXPDC/688 - checked DB 16/03/2023

## ASSEMBLY INSTRUCTIONS



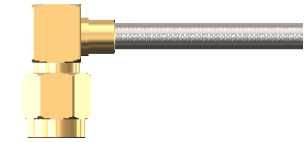
### Assembly Instructions

1) Strip the cable to the dimensions as shown, taking care not to nick the centre conductor.



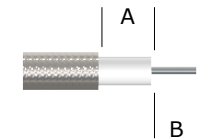
2) Slide the cable into the body so that the centre core of the cable locates in the internal mounting post. Then solder the centre core.

3) Solder the outer shield of the cable to the back of the connector and screw in the end cap.



### Strip Dimensions:

Conformable Cable - A=2.7mm, B=1.5mm  
Semi Rigid Cable - A=1.7mm, B=2.5mm



5	End Cap	Brass	Gold
4	Coupling Nut	Brass	Gold
3	Dielectric	PTFE	White
2	Pin	Brass	Gold
1	Body	Brass	Gold
Description	Material	Finish	

Unless otherwise specified tolerances  
 0.5-5 = ±0.2  
 >5-30 = ±0.4  
 >30-120 = ±0.6  
 >120-315 = ±1.0  
 >315-1000 = ±1.6  
 Angles = ±5°  
 Units = mm

This document is the confidential property of Gigatronix Limited and may not be copied, reproduced or transmitted to any third party without written authorisation.

# Gigatronix

**Part Number** MA17-0402-R01

**Title:** SMA Solder Right Angle Plug, Gold Plated, RG402, .141 semi-rigid

<b>Author</b>	PJP
<b>Drawn by</b>	PJP
<b>Drawing date</b>	07/08/2020
<b>Checked by</b>	SM
<b>Checked date</b>	14/08/2020
<b>Scale</b>	Not to scale