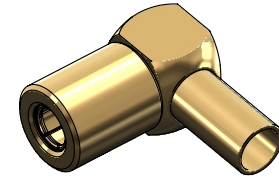


**Revisions**

Issue	Date	Note
1	10/10/2023	See GTXPDC/840

**DATASHEET**



**1. Mechanical**

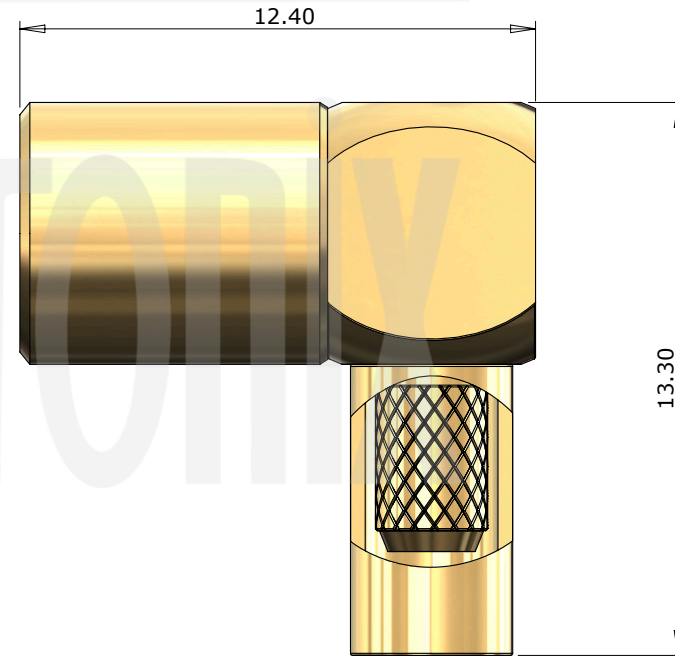
Fixing Method	Crimp
Cable Retention	Equal to breaking strain of cable
Durability	500 mating cycles
Contact Termination	Solder

**2. Environmental**

RoHS Compliant	Yes
Temperature Range	-65 to +165 degrees C

**3. Electrical**

Dielectric Withstanding	750 Volts RMS Maximum
Impedance	50 ohms
Interface Frequency	4 GHz
Working Voltage	335 Volts RMS Maximum



Description	Material	Finish
6 End Cap	Brass	Gold
5 Insulator	PTFE	White
4 Ferrule	Brass	Gold
3 Dielectric	PTFE	White
2 Contact	Beryllium Copper	Gold
1 Body	Brass	Gold

Unless otherwise specified tolerances  
 0.5-5 = ±0.2  
 >5-30 = ±0.4  
 >30-120 = ±0.6  
 >120-315 = ±1.0  
 >315-1000 = ±1.6  
 Angles = ±5°  
 Units = mm

This document is the confidential property of Gigatronix Limited and may not be copied, reproduced or transmitted to any third party without written authorisation.

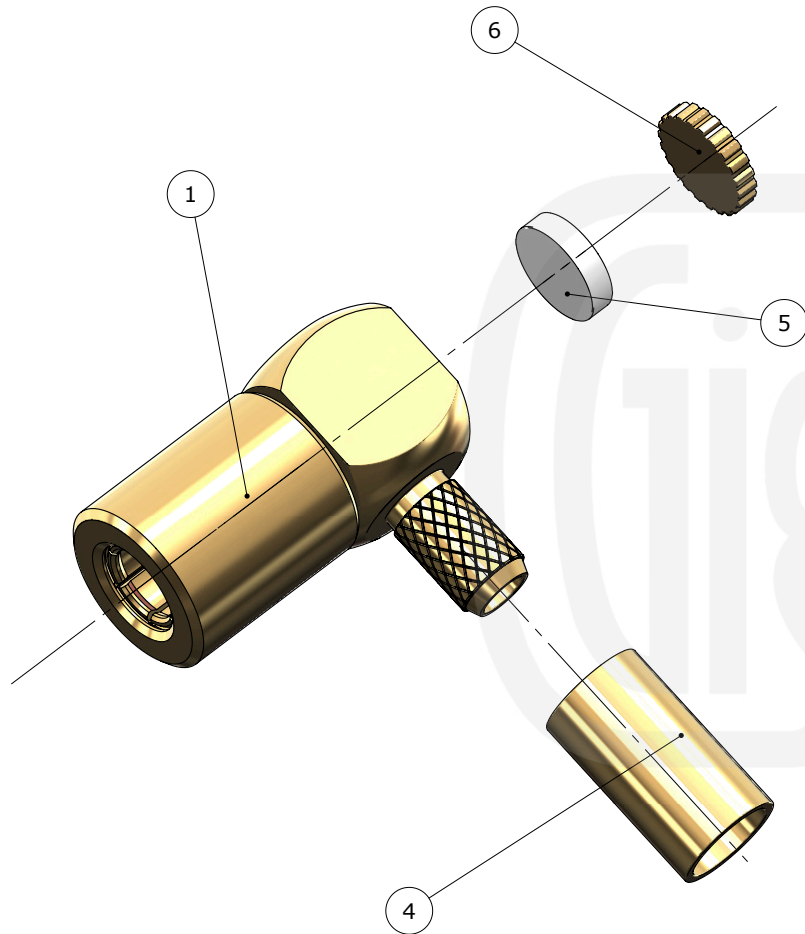


<b>Author</b>	PJP
<b>Drawn by</b>	PJP
<b>Drawing date</b>	10/10/2023
<b>Checked by</b>	DB
<b>Checked date</b>	12/10/2023
<b>Scale</b>	Not to scale

<b>Part Number</b>	MB17-0174-C01-LP
<b>Title:</b>	SMB Crimp Right Angle Plug, Low Profile, Gold Plated, RG174, LBC100, RG316

**Revisions**

Issue	Date	Note
1	10/10/2023	See GTXPDC/840



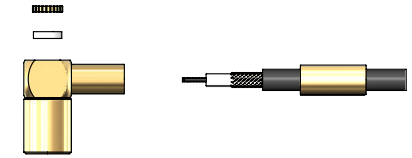
**Assembly Instructions**

1) Slide the ferrule onto the cable and strip the cable to the dimensions as shown, taking care not to nick the centre conductor or braid.

2) Insert the cable into the body, ensuring that the cable braid is on the outside of the connector mandril and that the centre core locates in the internal mounting post.

3) Slide the ferrule forward and crimp. Solder the centre core of the cable to the mounting post and fit the insulator and end cap.

**ASSEMBLY INSTRUCTIONS**



**Crimp Die Sizes:**  
3.25mm Hex., Solder centre core

**Strip Dimensions:**  
A=4.5mm, B=2.5mm, C=1.5mm



Description	Material	Finish
6 End Cap	Brass	Gold
5 Insulator	PTFE	White
4 Ferrule	Brass	Gold
3 Dielectric	PTFE	White
2 Contact	Beryllium Copper	Gold
1 Body	Brass	Gold

Unless otherwise specified tolerances  
 0.5-5 = ±0.2  
 >5-30 = ±0.4  
 >30-120 = ±0.6  
 >120-315 = ±1.0  
 >315-1000 = ±1.6  
 Angles = ±5°  
 Units = mm

This document is the confidential property of Gigatronix Limited and may not be copied, reproduced or transmitted to any third party without written authorisation.



<b>Author</b>	PJP
<b>Drawn by</b>	PJP
<b>Drawing date</b>	10/10/2023
<b>Checked by</b>	DB
<b>Checked date</b>	12/10/2023
<b>Scale</b>	Not to scale

**Part Number** MB17-0174-C01-LP  
**Title:** SMB Crimp Right Angle Plug, Low Profile, Gold Plated, RG174, LBC100, RG316